



GENERAL ELECTION 2017

CONSTITUENCY DOSSIER

Dr Adrian Worton

thegameisafot.weebly.com

How to use this guide

This guide is designed to help with following the events of the election night itself, as the results pour in.

The data within this guide is based on the election model built by myself, which you can find on thegameisafoot.weebly.com. It is based on bookies' odds, and uses these to give probabilities for each party standing in each constituency.

On the next page you will find a summary of our predictions for the election overall. These predictions, along with the probabilities given elsewhere in the dossier, are made using data from the morning of the 8th of June.

In the main body of this dossier, you will find each UK constituency listed alphabetically. Sometimes constituencies are listed differently depending on the source, namely ones with a compass direction in their name. For instance, Central Devon might be written Devon Central. In this guide, constituencies relating to a county have the compass direction at the start, such as Central Devon. Constituencies relating to a city or town have the compass direction at the end, such as Belfast South.

For each constituency, you will find various information. Firstly, the list of favourite, 2nd-favourite and 3rd-favourite list the three parties most likely to win the seat, according to our model, and our prediction of each party's chances. The incumbent is highlighted in bold.

In the 'Marg' column you will see the 100 closest seats in our model listed. So the seat with a 1 in this column is the closest, the one with 2 the second-closest, and so on.

In the '2015 Dec' column is the time at which we recorded the result of that seat in 2015. This will provide a rough guide of when to expect that seat's result this year.

The Notable candidates column is a list of (fairly arbitrary) notable candidates for various seats. It is not necessarily the incumbent, some are challengers.

Finally, you can log onto TGI AF to follow our election coverage live. You will find all sorts of information and predictions as the night unfolds, and this page can be found at <http://thegameisafoot.weebly.com/election-live-2017.html>.

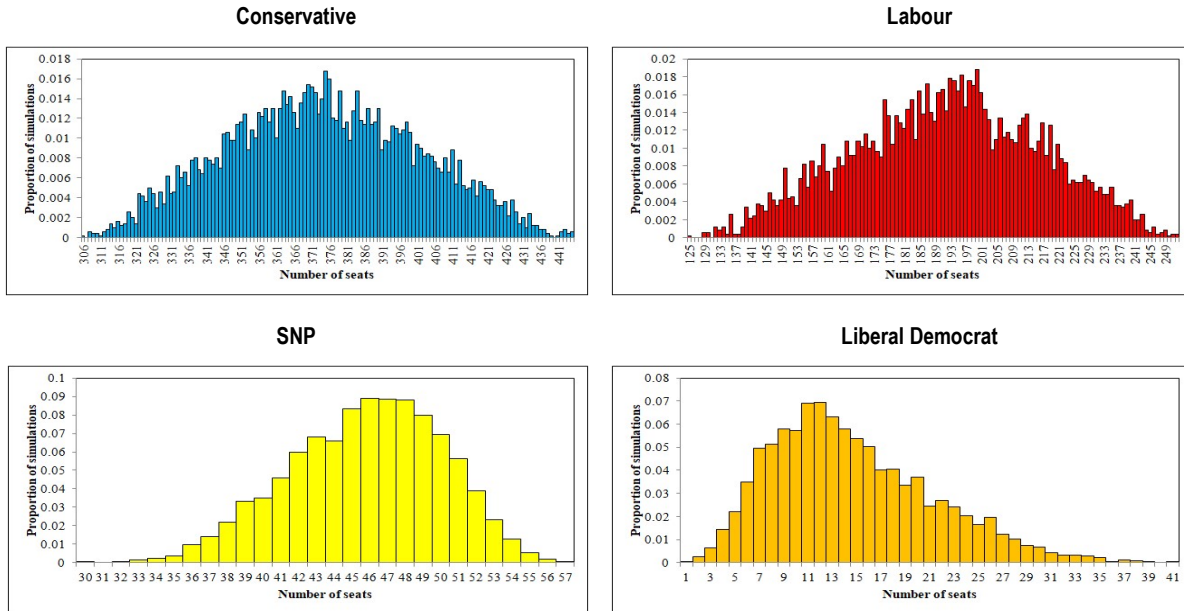
I hope this guide is as useful for you as it the model has been fun for me to create!

Final TGIAF model predictions

Party	Expected seats	Likely range	External prediction*
Conservatives	375	353-396	278.4
Labour	192	174-210	182.2
SNP	46	43-49	37.2
Liberal Democrats	13	10-20	4.2
Democratic Unionist	8	7-9	n/a
Sinn Féin	6	5-7	n/a
Plaid Cymru	4	3-5	1.8
SDLP	2	1-2	n/a
Ulster Unionist	1	0-1	n/a
Green	1	1-1	1
UKIP	0	0-1	0
Independents & other parties	2	1-2	n/a

*external prediction an average of those made by Electoral Calculus, YouGov, Marriot Stats and Ashcroft polls

Simulated range of seat counts



Country-by-country predictions

Nation	Party	Expected seats	Likely range
England	Conservative	353	336-369
	Labour	169	155-184
	Liberal Democrat	8	6-13
	Green	1	1-1
Scotland	SNP	46	43-49
	Conservative	8	5-10
	Liberal Democrat	4	3-5
	Labour	1	1-2
Wales	Labour	21	18-24
	Conservative	14	12-17
	Plaid Cymru	4	3-5
	Liberal Democrat	1	1-2

For Northern Ireland, see DUP, Sinn Féin, SDLP, UUP and Independents in table at the top of this page

Marg	Seat	Region	Favourite	2nd-favourite	3rd-favourite	2015 Dec	Notable candidates
	Aberavon	Wales	LAB 99.0%	CON 0.5%	UKIP 0.2%	03:20	Stephen Kinnock
	Aberconwy	Wales	CON 98.3%	LAB 1.5%	PLA 0.1%	02:49	
	Aberdeen North	East Scotland	SNP 99.1%	CON 0.5%	LAB 0.3%	03:42	
10	Aberdeen South	East Scotland	SNP 53.3%	CON 46.4%	LAB 0.2%	04:23	
	Airdrie and Shotts	West Scotland	SNP 99.3%	LAB 0.6%	CON 0.1%	03:08	
	Aldershot	South England	CON 99.3%	LIB 0.4%	LAB 0.2%	04:12	
	Aldridge-Brownhills	West Midlands	CON 99.7%	LAB 0.2%	LIB 0.1%	04:57	
	Altrincham and Sale West	Greater Manchester	CON 99.7%	LAB 0.2%	LIB 0.1%	05:39	
3	Alyn and Deeside	Wales	LAB 50.9%	CON 49.1%	other 0.0%	03:39	
	Amber Valley	East Midlands	CON 98.9%	LAB 1.1%	other 0.0%	04:14	
89	Angus	East Scotland	SNP 79.6%	CON 20.4%	other 0.0%	02:37	
	Arfon	Wales	PLA 95.1%	LAB 4.8%	CON 0.2%	02:19	
	Argyll and Bute	West Scotland	SNP 91.5%	LIB 5.3%	CON 3.2%	05:41	
	Arundel and South Downs	South East England	CON 99.8%	LAB 0.1%	UKIP 0.1%	07:49	
45	Ashfield	East Midlands	LAB 65.5%	CON 34.3%	LIB 0.1%	05:33	Gloria De Piero
	Ashford	South East England	CON 99.6%	LAB 0.2%	GRE 0.1%	05:28	Damian Green
	Ashton-under-Lyne	Greater Manchester	LAB 96.2%	CON 3.8%	UKIP 0.0%	08:11	
	Aylesbury	Essex	CON 99.9%	LAB 0.1%	UKIP 0.0%	05:58	
	Ayr, Carrick and Cumnock	West Scotland	SNP 92.7%	CON 6.7%	LAB 0.5%	04:21	
	Banbury	West England	CON 99.7%	LAB 0.2%	LIB 0.1%	07:46	
	Banff and Buchan	East Scotland	SNP 86.8%	CON 13.2%	other 0.0%	04:06	
	Barking	North London	LAB 98.7%	CON 1.2%	UKIP 0.1%	04:17	Margaret Hodge
	Barnsley Central	Humberside	LAB 98.5%	CON 1.5%	UKIP 0.1%	03:34	Dan Jarvis
	Barnsley East	Humberside	LAB 98.3%	CON 1.6%	UKIP 0.1%	03:58	
	Barrow and Furness	North England	CON 85.6%	LAB 14.3%	LIB 0.1%	06:55	
	Basildon and Billericay	Essex	CON 99.8%	LAB 0.2%	other 0.0%	03:26	
	Basingstoke	South England	CON 99.6%	LAB 0.3%	LIB 0.1%	05:20	
86	Bassetlaw	East Midlands	LAB 78.4%	CON 21.6%	UKIP 0.0%	05:31	
71	Bath	West England	CON 72.8%	LIB 27.1%	LAB 0.1%	04:42	
61	Batley and Spen	Yorkshire	LAB 70.5%	CON 29.4%	UKIP 0.1%	06:26	Tracy Brabin
	Battersea	South London	CON 95.6%	LAB 4.4%	LIB 0.0%	01:24	
	Beaconsfield	Essex	CON 99.6%	LAB 0.2%	LIB 0.1%	06:51	
	Beckenham	South London	CON 99.5%	LAB 0.2%	LIB 0.1%	03:40	
	Bedford	East Anglia	CON 87.6%	LAB 12.2%	LIB 0.1%	09:22	
14	Belfast East	Northern Ireland	IND 53.9%	DUP 46.0%	UUP 0.1%	02:49	
93	Belfast North	Northern Ireland	DUP 81.1%	SIN 18.9%	other 0.0%	03:30	
53	Belfast South	Northern Ireland	SDLP 61.9%	DUP 26.4%	IND 8.4%	03:51	
	Belfast West	Northern Ireland	SIN 99.9%	IND 0.1%	other 0.0%	03:06	
	Bermondsey and Old Southwark	South London	LAB 86.3%	LIB 13.6%	CON 0.1%	04:10	
	Berwickshire, Roxburgh and Selkirk	East Scotland	CON 96.7%	SNP 2.9%	LIB 0.3%	07:24	
	Berwick-upon-Tweed	North England	CON 97.4%	LIB 2.5%	LAB 0.1%	13:04	
	Bethnal Green and Bow	North London	LAB 99.8%	CON 0.2%	other 0.0%	05:37	
	Beverley and Holderness	Humberside	CON 99.8%	LAB 0.2%	LIB 0.1%	04:51	
	Bexhill and Battle	South East England	CON 99.6%	LAB 0.1%	LIB 0.1%	07:38	
	Bexleyheath and Crayford	South London	CON 99.6%	LAB 0.3%	LIB 0.1%	03:48	
	Birkenhead	Lancashire	LAB 99.7%	CON 0.2%	GRE 0.0%	03:57	
44	Birmingham, Edgbaston	West Midlands	CON 65.5%	LAB 34.5%	UKIP 0.0%	05:53	
32	Birmingham, Erdington	West Midlands	LAB 59.9%	CON 40.1%	other 0.0%	04:49	
	Birmingham, Hall Green	West Midlands	LAB 99.7%	CON 0.2%	LIB 0.1%	06:02	
	Birmingham, Hodge Hill	West Midlands	LAB 99.7%	CON 0.2%	LIB 0.1%	05:17	Liam Byrne
	Birmingham, Ladywood	West Midlands	LAB 99.7%	CON 0.2%	LIB 0.1%	05:46	
84	Birmingham, Northfield	West Midlands	CON 76.9%	LAB 22.8%	UKIP 0.2%	07:52	
	Birmingham, Perry Barr	West Midlands	LAB 98.8%	CON 1.1%	UKIP 0.0%	06:11	
	Birmingham, Selly Oak	West Midlands	LAB 86.0%	CON 14.0%	other 0.0%	05:25	
	Birmingham, Yardley	West Midlands	LAB 85.4%	LIB 13.9%	CON 0.7%	05:33	Jess Phillips
33	Bishop Auckland	North England	CON 60.2%	LAB 39.7%	UKIP 0.1%	03:46	
	Blackburn	Lancashire	LAB 96.4%	CON 3.5%	UKIP 0.1%	03:15	
	Blackley and Broughton	Greater Manchester	LAB 98.6%	CON 1.4%	UKIP 0.1%	04:36	
	Blackpool North and Cleveleys	Lancashire	CON 98.4%	LAB 1.6%	other 0.0%	05:38	
48	Blackpool South	Lancashire	CON 65.6%	LAB 34.4%	other 0.0%	05:05	
	Blaenau Gwent	Wales	LAB 98.0%	PLA 1.9%	CON 0.1%	02:14	
	Blaydon	North England	LAB 98.4%	CON 1.5%	LIB 0.1%	04:21	
85	Blyth Valley	North England	LAB 78.2%	CON 21.5%	LIB 0.2%	13:03	
	Bognor Regis and Littlehampton	South East England	CON 99.8%	LIB 0.1%	UKIP 0.0%	07:14	
	Bolsover	East Midlands	LAB 93.5%	CON 6.4%	UKIP 0.1%	07:03	Dennis Skinner
31	Bolton North East	Greater Manchester	CON 59.6%	LAB 40.3%	UKIP 0.1%	03:56	

Marg	Seat	Region	Favourite	2nd-favourite	3rd-favourite	2015 Dec	Notable candidates
	Bolton South East	Greater Manchester	LAB 97.9%	CON 1.9%	UKIP 0.2%	04:21	
	Bolton West	Greater Manchester	CON 95.8%	LAB 4.1%	UKIP 0.0%	07:51	
	Bootle	Lancashire	LAB 99.6%	CON 0.2%	UKIP 0.1%	03:36	
	Boston and Skegness	Humberside	CON 99.2%	UKIP 0.7%	LAB 0.0%	06:22	Paul Nuttall
	Bosworth	East Midlands	CON 98.8%	LIB 1.1%	LAB 0.1%	05:40	
	Bournemouth East	South West England	CON 99.9%	LAB 0.1%	LIB 0.1%	06:22	
	Bournemouth West	South West England	CON 99.9%	LAB 0.1%	LIB 0.0%	05:59	
	Bracknell	South England	CON 99.6%	LAB 0.2%	GRE 0.1%	05:49	
	Bradford East	Yorkshire	LAB 97.1%	LIB 1.8%	CON 0.9%	05:40	
	Bradford South	Yorkshire	LAB 85.9%	CON 14.0%	UKIP 0.1%	06:24	
	Bradford West	Yorkshire	LAB 92.6%	IND 6.7%	CON 0.7%	06:08	
	Braintree	Essex	CON 99.7%	LAB 0.2%	LIB 0.1%	05:48	
	Brecon and Radnorshire	Wales	CON 91.8%	LIB 8.1%	LAB 0.2%	02:54	
	Brent Central	North London	LAB 97.8%	CON 1.7%	LIB 0.5%	03:41	
	Brent North	North London	LAB 96.6%	CON 3.3%	LIB 0.1%	04:21	
11	Brentford and Isleworth	South London	CON 53.5%	LAB 46.5%	LIB 0.0%	05:09	
	Brentwood and Ongar	Essex	CON 97.8%	LIB 1.8%	LAB 0.2%	04:11	
15	Bridgend	Wales	CON 53.9%	LAB 46.0%	PLA 0.1%	07:43	
	Bridgwater and West Somerset	South West England	CON 99.7%	LIB 0.2%	LAB 0.1%	08:35	
	Brigg and Goole	Humberside	CON 99.9%	LAB 0.1%	other 0.0%	05:26	
12	Brighton, Kemptown	South East England	CON 53.8%	LAB 45.9%	GRE 0.1%	06:46	
	Brighton, Pavilion	South East England	GRE 97.8%	LAB 1.2%	CON 0.9%	07:36	Caroline Lucas
19	Bristol East	West England	CON 55.4%	LAB 44.5%	UKIP 0.1%	05:50	
	Bristol North West	West England	CON 97.6%	LAB 2.3%	LIB 0.0%	03:57	
	Bristol South	West England	LAB 83.8%	CON 16.1%	GRE 0.0%	06:12	
	Bristol West	West England	LAB 88.5%	GRE 9.1%	LIB 1.6%	06:52	
	Broadland	East Anglia	CON 99.9%	LIB 0.1%	LAB 0.1%	09:31	
	Bromley and Chislehurst	South London	CON 99.9%	LIB 0.1%	LAB 0.1%	03:12	
	Bromsgrove	Severn	CON 99.7%	LIB 0.2%	LAB 0.1%	07:06	Sajid Javid
	Broxbourne	Essex	CON 99.9%	LAB 0.1%	LIB 0.0%	02:28	
	Broxtowe	East Midlands	CON 98.9%	LAB 1.1%	other 0.0%	05:08	
	Buckingham	Essex	CON 99.8%	LIB 0.2%	other 0.0%	06:21	John Bercow
	Burnley	Lancashire	LAB 83.4%	CON 8.9%	LIB 7.7%	02:54	
	Burton	Severn	CON 99.8%	LAB 0.2%	other 0.0%	03:36	
	Bury North	Greater Manchester	CON 90.3%	LAB 9.7%	other 0.0%	05:15	
9	Bury South	Greater Manchester	CON 53.0%	LAB 47.0%	other 0.0%	07:53	
	Bury St Edmunds	East Anglia	CON 99.8%	LAB 0.2%	LIB 0.0%	07:09	
	Caerphilly	Wales	LAB 97.9%	CON 1.8%	PLA 0.4%	02:58	
7	Caithness, Sutherland and Easter Ross	East Scotland	SNP 52.5%	LIB 47.3%	CON 0.2%	04:45	
	Calder Valley	Yorkshire	CON 98.1%	LAB 1.9%	LIB 0.0%	06:22	
	Camberwell and Peckham	South London	LAB 99.7%	CON 0.2%	GRE 0.1%	04:47	Harriet Harman
	Camborne and Redruth	South West England	CON 99.4%	LAB 0.4%	LIB 0.2%	05:04	
29	Cambridge	East Anglia	LAB 59.3%	LIB 40.3%	CON 0.4%	05:52	
	Cannock Chase	Severn	CON 99.2%	LAB 0.8%	other 0.0%	05:11	
	Canterbury	South East England	CON 99.4%	LAB 0.3%	LIB 0.3%	04:42	
	Cardiff Central	Wales	LAB 86.8%	LIB 12.5%	CON 0.7%	03:31	
82	Cardiff North	Wales	CON 76.7%	LAB 23.3%	other 0.0%	04:11	
	Cardiff South and Penarth	Wales	LAB 89.1%	CON 10.9%	LIB 0.1%	03:45	
	Cardiff West	Wales	LAB 88.0%	CON 11.6%	PLA 0.4%	07:53	
	Carlisle	North England	CON 98.6%	LAB 1.4%	other 0.0%	03:49	
	Carmarthen East and Dinefwr	Wales	PLA 90.9%	CON 5.9%	LAB 3.2%	02:47	
	Carmarthen West and South Pembrokeshire	Wales	CON 98.7%	LAB 1.2%	PLA 0.2%	03:56	
76	Carshalton and Wallington	South London	CON 75.1%	LIB 24.9%	other 0.0%	04:13	
	Castle Point	Essex	CON 99.6%	UKIP 0.3%	LAB 0.1%	02:35	
	Central Ayrshire	West Scotland	SNP 99.3%	CON 0.5%	LAB 0.3%	03:53	
	Central Devon	South West England	CON 99.9%	LIB 0.1%	LAB 0.0%	11:26	
	Central Suffolk and North Ipswich	East Anglia	CON 99.8%	LAB 0.2%	other 0.0%	06:49	
	Ceredigion	Wales	LIB 83.6%	PLA 15.7%	CON 0.6%	02:12	
	Charnwood	East Midlands	CON 99.8%	LAB 0.2%	other 0.0%	06:23	
	Chatham and Aylesford	South East England	CON 99.9%	LAB 0.1%	UKIP 0.1%	08:28	
	Cheadle	Greater Manchester	CON 92.5%	LIB 7.5%	other 0.0%	07:08	
	Chelmsford	Essex	CON 99.6%	LAB 0.1%	LAB 0.1%	03:10	
	Chelsea and Fulham	North London	CON 99.8%	LAB 0.2%	other 0.0%	03:33	
	Cheltenham	West England	CON 86.9%	LIB 13.1%	other 0.0%	04:52	
	Chesham and Amersham	Essex	CON 99.3%	GRE 0.2%	GRE 0.2%	06:34	
	Chesterfield	East Midlands	LAB 97.1%	CON 1.7%	LIB 1.2%	04:54	

Marg	Seat	Region	Favourite	2nd-favourite	3rd-favourite	2015 Dec	Notable candidates
	Chichester	South East England	CON 99.3%	GRE 0.2%	GRE 0.2%	06:44	
	Chingford and Woodford Green	North London	CON 99.2%	LAB 0.6%	LIB 0.1%	06:21	Iain Duncan Smith
	Chippenham	West England	CON 97.8%	LIB 2.2%	other 0.0%	03:43	
	Chipping Barnet	North London	CON 99.5%	LAB 0.4%	LIB 0.1%	04:59	
5	Chorley	Lancashire	LAB 51.8%	CON 48.2%	other 0.0%	04:24	
	Christchurch	South West England	CON 99.3%	GRE 0.2%	GRE 0.2%	05:44	
	Cities of London and Westminster	North London	CON 99.6%	LAB 0.3%	LIB 0.1%	02:54	
	City of Chester	Severn	CON 85.9%	LAB 14.0%	LIB 0.1%	07:16	
	City of Durham	North England	LAB 98.4%	LIB 0.9%	CON 0.7%	04:06	
	Clacton	Essex	CON 97.0%	UKIP 2.9%	LAB 0.1%	04:19	
	Cleethorpes	Humberside	CON 99.4%	LAB 0.5%	LIB 0.1%	04:49	
68	Clwyd South	Wales	CON 72.5%	LAB 27.4%	PLA 0.1%	01:46	
	Clwyd West	Wales	CON 98.8%	LAB 1.0%	PLA 0.2%	03:33	
	Coatbridge, Chryston and Bellshill	West Scotland	SNP 99.5%	LAB 0.4%	CON 0.1%	03:43	
	Colchester	Essex	CON 97.8%	LIB 1.7%	LAB 0.4%	05:42	
	Colne Valley	Yorkshire	CON 99.4%	LAB 0.6%	other 0.0%	06:10	
	Congleton	Severn	CON 99.9%	LAB 0.1%	other 0.0%	09:14	
	Copeland	North England	CON 88.3%	LAB 11.7%	other 0.0%	05:14	
	Corby	East Anglia	CON 94.8%	LAB 5.2%	other 0.0%	05:53	
	Coventry North East	West Midlands	LAB 98.2%	CON 1.8%	other 0.0%	07:54	
20	Coventry North West	West Midlands	CON 55.4%	LAB 44.6%	other 0.0%	03:39	
47	Coventry South	West Midlands	CON 65.6%	LAB 34.4%	other 0.0%	03:25	
	Crawley	South East England	CON 99.8%	LAB 0.2%	other 0.0%	03:46	
	Crewe and Nantwich	Severn	CON 98.4%	LAB 1.6%	other 0.0%	09:21	
2	Croydon Central	South London	LAB 50.3%	CON 49.6%	LIB 0.1%	06:32	
	Croydon North	South London	LAB 99.2%	CON 0.8%	other 0.0%	04:53	
	Croydon South	South London	CON 99.3%	GRE 0.2%	GRE 0.2%	05:46	
	Cumbernauld, Kilsyth and Kirkintilloch East	West Scotland	SNP 99.6%	LAB 0.3%	CON 0.0%	03:28	
	Cynon Valley	Wales	LAB 98.7%	PLA 1.0%	CON 0.2%	03:41	
21	Dagenham and Rainham	North London	LAB 56.1%	CON 43.5%	UKIP 0.4%	03:43	Jon Cruddas
66	Darlington	North England	CON 72.4%	LAB 27.6%	other 0.0%	02:28	
	Dartford	South East England	CON 99.7%	LAB 0.2%	UKIP 0.1%	06:08	
	Daventry	East Anglia	CON 99.6%	IND 0.2%	LAB 0.1%	06:09	
42	Delyn	Wales	CON 64.4%	LAB 35.6%	other 0.0%	03:47	
	Denton and Reddish	Greater Manchester	LAB 96.2%	CON 3.7%	UKIP 0.1%	08:35	
	Derby North	East Midlands	CON 90.4%	LAB 9.5%	LIB 0.1%	09:13	
	Derby South	East Midlands	LAB 92.8%	CON 7.2%	other 0.0%	04:18	Margaret Beckett
	Derbyshire Dales	East Midlands	CON 99.8%	LAB 0.2%	other 0.0%	06:47	
	Devizes	West England	CON 99.5%	IND 0.2%	LAB 0.1%	04:35	
81	Dewsbury	Yorkshire	CON 76.7%	LAB 23.3%	UKIP 0.1%	07:17	
94	Don Valley	Humberside	LAB 81.2%	CON 18.7%	UKIP 0.1%	05:51	Caroline Flint
	Doncaster Central	Humberside	LAB 97.2%	CON 2.8%	other 0.0%	05:41	
	Doncaster North	Humberside	LAB 95.0%	CON 5.0%	UKIP 0.0%	05:22	Ed Miliband
	Dover	South East England	CON 99.7%	LAB 0.2%	UKIP 0.1%	04:54	
60	Dudley North	West Midlands	CON 69.8%	LAB 30.0%	UKIP 0.2%	05:07	
	Dudley South	West Midlands	CON 99.4%	LAB 0.6%	other 0.0%	04:29	
	Dulwich and West Norwood	South London	LAB 99.6%	CON 0.4%	other 0.0%	03:33	
	Dumfries and Galloway	West Scotland	CON 93.7%	SNP 6.2%	LAB 0.2%	05:13	
	Dumfriesshire, Clydesdale and Tweeddale	West Scotland	CON 89.7%	SNP 10.3%	other 0.0%	04:58	David Mundell
	Dundee East	East Scotland	SNP 99.7%	CON 0.2%	CON 0.2%	02:41	
	Dundee West	East Scotland	SNP 99.8%	LAB 0.2%	CON 0.0%	02:28	
	Dunfermline and West Fife	East Scotland	SNP 97.5%	CON 1.5%	LAB 1.0%	03:31	
	Dwyfor Meirionnydd	Wales	PLA 91.2%	CON 8.8%	LAB 0.1%	03:22	
51	Ealing Central and Acton	South London	LAB 66.9%	CON 33.1%	LIB 0.1%	02:55	
	Ealing North	South London	LAB 98.0%	CON 2.0%	LIB 0.0%	03:16	
	Ealing, Southall	South London	LAB 99.7%	CON 0.1%	GRE 0.1%	03:37	
	Easington	North England	LAB 99.3%	CON 0.6%	UKIP 0.1%	03:11	
	East Antrim	Northern Ireland	DUP 99.9%	IND 0.1%	other 0.0%	02:29	
	East Devon	South West England	CON 93.7%	IND 6.3%	other 0.0%	07:31	
69	East Dunbartonshire	West Scotland	LIB 72.3%	SNP 27.2%	CON 0.4%	02:48	
	East Ham	North London	LAB 99.9%	CON 0.1%	other 0.0%	04:05	
	East Hampshire	South England	CON 99.9%	LIB 0.1%	other 0.0%	06:03	
	East Kilbride, Strathaven and Lesmahagow	West Scotland	SNP 98.3%	LAB 1.1%	CON 0.6%	02:38	
	East Londonderry	Northern Ireland	DUP 100.0%	CON 0.0%	other 0.0%	04:26	
74	East Lothian	East Scotland	SNP 68.1%	LAB 19.7%	CON 12.2%	04:00	
37	East Renfrewshire	West Scotland	CON 59.7%	SNP 35.8%	LAB 4.6%	03:13	

Marg	Seat	Region	Favourite	2nd-favourite	3rd-favourite	2015 Dec	Notable candidates
	East Surrey	South England	CON 99.9%	LIB 0.1%	other 0.0%	05:04	
	East Worthing and Shoreham	South East England	CON 99.6%	LAB 0.2%	LAB 0.2%	07:11	
	East Yorkshire	Humberside	CON 99.8%	LAB 0.1%	LIB 0.1%	04:56	
65	Eastbourne	South East England	CON 71.5%	LIB 28.5%	other 0.0%	04:40	
	Eastleigh	South England	CON 96.7%	LIB 3.3%	UKIP 0.0%	04:18	
	Eddisbury	Severn	CON 99.8%	LAB 0.1%	LIB 0.1%	05:21	
	Edinburgh East	East Scotland	SNP 97.1%	LAB 2.1%	CON 0.8%	04:50	
72	Edinburgh North and Leith	East Scotland	SNP 69.6%	CON 22.8%	LAB 7.6%	04:41	
	Edinburgh South	East Scotland	LAB 83.0%	SNP 11.9%	CON 5.2%	04:29	
54	Edinburgh South West	East Scotland	SNP 67.7%	CON 30.7%	LAB 1.6%	04:12	
100	Edinburgh West	East Scotland	LIB 81.9%	SNP 15.7%	LIB 2.4%	05:11	
	Edmonton	North London	LAB 97.8%	CON 2.2%	other 0.0%	04:03	
50	Ellesmere Port and Neston	Severn	LAB 66.9%	CON 33.1%	other 0.0%	05:40	
	Elmet and Rothwell	Yorkshire	CON 99.2%	LAB 0.6%	LIB 0.1%	06:44	
55	Eltham	South London	CON 68.6%	LAB 31.4%	other 0.0%	04:12	
30	Enfield North	North London	CON 59.6%	LAB 40.3%	LIB 0.1%	03:49	
	Enfield, Southgate	North London	CON 93.4%	LAB 6.6%	LIB 0.0%	03:52	
	Epping Forest	Essex	CON 99.7%	LAB 0.1%	LAB 0.1%	03:54	
	Epsom and Ewell	South England	CON 99.7%	LIB 0.1%	LAB 0.1%	06:40	Chris Grayling
	Erewash	East Midlands	CON 98.8%	LAB 1.1%	UKIP 0.0%	04:07	
	Erith and Thamesmead	South London	LAB 93.0%	CON 7.0%	other 0.0%	04:12	
	Esher and Walton	South England	CON 99.9%	LIB 0.1%	other 0.0%	04:38	
	Exeter	South West England	LAB 89.1%	CON 10.9%	other 0.0%	04:24	
	Falkirk	East Scotland	SNP 98.9%	CON 0.7%	LAB 0.4%	02:30	
	Fareham	South England	CON 99.7%	LIB 0.1%	LAB 0.1%	02:32	
	Faversham and Mid Kent	South East England	CON 99.9%	LAB 0.1%	LIB 0.0%	06:42	
	Feltham and Heston	South London	LAB 95.4%	CON 4.6%	other 0.0%	04:29	
99	Fermanagh and South Tyrone	Northern Ireland	SIN 83.0%	UUP 17.0%	other 0.0%	05:23	
	Filton and Bradley Stoke	West England	CON 99.3%	LAB 0.6%	LIB 0.1%	05:55	
	Finchley and Golders Green	North London	CON 97.8%	LAB 2.2%	other 0.0%	05:19	
	Folkestone and Hythe	South East England	CON 99.8%	UKIP 0.1%	LIB 0.1%	05:15	
	Forest of Dean	West England	CON 99.6%	LAB 0.4%	other 0.0%	07:44	
90	Foyle	Northern Ireland	SDLP 79.9%	SIN 20.1%	other 0.0%	01:44	
	Fylde	Lancashire	CON 99.8%	LAB 0.1%	UKIP 0.1%	05:37	
	Gainsborough	Humberside	CON 99.8%	LAB 0.1%	LIB 0.1%	08:01	
	Garston and Halewood	Lancashire	LAB 99.8%	CON 0.2%	LIB 0.1%	03:54	Maria Eagle
	Gateshead	North England	LAB 98.5%	CON 1.3%	UKIP 0.1%	03:57	
58	Gedling	East Midlands	CON 69.0%	LAB 31.0%	other 0.0%	07:49	
	Gillingham and Rainham	South East England	CON 99.6%	LAB 0.3%	LIB 0.1%	08:46	
	Glasgow Central	West Scotland	SNP 98.4%	LAB 1.6%	CON 0.1%	07:55	
	Glasgow East	West Scotland	SNP 98.5%	LAB 1.4%	CON 0.1%	03:27	
	Glasgow North	West Scotland	SNP 98.3%	LAB 1.3%	GRE 0.3%	03:16	
	Glasgow North East	West Scotland	SNP 98.8%	LAB 1.1%	CON 0.1%	03:47	
	Glasgow North West	West Scotland	SNP 99.1%	LAB 0.7%	CON 0.2%	04:02	
	Glasgow South	West Scotland	SNP 99.0%	LAB 0.9%	CON 0.1%	03:57	
	Glasgow South West	West Scotland	SNP 98.9%	LAB 1.0%	CON 0.1%	03:31	
	Glenrothes	East Scotland	SNP 99.5%	LAB 0.4%	CON 0.1%	02:31	
	Gloucester	West England	CON 99.2%	LAB 0.7%	LIB 0.1%	05:04	
	Gordon	East Scotland	SNP 90.5%	CON 9.1%	LIB 0.4%	04:15	Alex Salmond
	Gosport	South England	CON 99.9%	LAB 0.1%	LIB 0.1%	02:56	
56	Gower	Wales	CON 68.7%	LAB 31.2%	PLA 0.1%	05:18	
	Grantham and Stamford	Humberside	CON 99.9%	LAB 0.1%	LIB 0.1%	06:47	
	Gravesham	South East England	CON 99.3%	LAB 0.6%	UKIP 0.1%	06:54	
22	Great Grimsby	Humberside	CON 56.5%	LAB 43.4%	UKIP 0.1%	03:44	
	Great Yarmouth	East Anglia	CON 99.7%	LAB 0.2%	UKIP 0.1%	06:32	
	Greenwich and Woolwich	South London	LAB 97.9%	CON 2.0%	LIB 0.0%	04:24	
	Guildford	South England	CON 99.9%	LIB 0.1%	other 0.0%	05:34	
	Hackney North and Stoke Newington	North London	LAB 99.7%	CON 0.2%	LIB 0.1%	04:37	Diane Abbott
	Hackney South and Shoreditch	North London	LAB 99.8%	CON 0.1%	LIB 0.1%	04:04	
	Halesowen and Rowley Regis	West Midlands	CON 98.6%	LAB 1.4%	UKIP 0.0%	04:45	
	Halifax	Yorkshire	CON 89.1%	LAB 10.7%	UKIP 0.1%	08:48	
	Haltemprice and Howden	Humberside	CON 99.9%	LAB 0.1%	other 0.0%	05:00	David Davis
	Halton	Severn	LAB 99.7%	CON 0.2%	GRE 0.0%	02:32	
	Hammersmith	North London	LAB 96.1%	CON 3.9%	other 0.0%	03:12	
91	Hampstead and Kilburn	North London	LAB 80.2%	CON 19.7%	LIB 0.1%	05:00	
	Harborough	East Midlands	CON 99.6%	LAB 0.1%	LAB 0.1%	09:48	

Marg	Seat	Region	Favourite	2nd-favourite	3rd-favourite	2015 Dec	Notable candidates
	Harlow	Essex	CON 99.1%	LAB 0.8%	LIB 0.1%	03:29	
	Harrogate and Knaresborough	Yorkshire	CON 99.6%	LAB 0.3%	LIB 0.1%	03:27	
	Harrow East	North London	CON 98.0%	LAB 2.0%	other 0.0%	04:19	
8	Harrow West	North London	CON 52.9%	LAB 47.1%	other 0.0%	04:41	
24	Hartlepool	North England	LAB 56.6%	CON 42.8%	UKIP 0.6%	03:28	
	Harwich and North Essex	Essex	CON 99.8%	LAB 0.1%	UKIP 0.1%	05:53	
	Hastings and Rye	South East England	CON 93.9%	LAB 6.1%	UKIP 0.0%	04:02	Amber Rudd
	Havant	South England	CON 99.9%	UKIP 0.1%	LAB 0.1%	02:55	
	Hayes and Harlington	South London	LAB 98.8%	CON 1.2%	UKIP 0.1%	03:56	John McDonnell
	Hazel Grove	Greater Manchester	CON 95.5%	LIB 4.5%	other 0.0%	05:23	
	Hemel Hempstead	Essex	CON 99.9%	LAB 0.1%	UKIP 0.0%	07:45	
	Hemsworth	Yorkshire	LAB 96.5%	CON 3.4%	UKIP 0.0%	06:19	
	Hendon	North London	CON 92.3%	LAB 7.7%	other 0.0%	04:23	
	Henley	West England	CON 99.9%	LAB 0.1%	LIB 0.0%	06:19	
	Hereford and South Herefordshire	Severn	CON 99.8%	LAB 0.1%	LAB 0.1%	04:25	
	Hertford and Stortford	Essex	CON 99.9%	LAB 0.1%	other 0.0%	05:33	
	Hertsmere	Essex	CON 99.7%	LAB 0.1%	GRE 0.0%	03:56	
	Hexham	North England	CON 99.9%	LAB 0.1%	other 0.0%	13:42	
	Heywood and Middleton	Greater Manchester	LAB 83.7%	CON 14.9%	UKIP 1.4%	03:53	
	High Peak	East Midlands	CON 98.9%	LAB 1.1%	other 0.0%	05:18	
	Hitchin and Harpenden	Essex	CON 99.9%	LAB 0.1%	other 0.0%	05:16	
	Holborn and St Pancras	North London	LAB 99.9%	CON 0.1%	other 0.0%	05:09	Keir Starmer
	Hornchurch and Upminster	North London	CON 99.8%	LAB 0.1%	UKIP 0.0%	05:14	
	Hornsey and Wood Green	North London	LAB 94.7%	LIB 5.2%	CON 0.0%	04:08	
	Horsham	South East England	CON 99.7%	LIB 0.2%	LAB 0.1%	07:06	
	Houghton and Sunderland South	North England	LAB 98.7%	CON 1.0%	UKIP 0.3%	22:53	
13	Hove	South East England	LAB 53.9%	CON 46.0%	LIB 0.1%	07:20	
	Huddersfield	Yorkshire	LAB 89.2%	CON 10.7%	UKIP 0.0%	05:22	
	Huntingdon	East Anglia	CON 99.7%	LIB 0.1%	LAB 0.1%	04:37	
16	Hyndburn	Lancashire	LAB 53.9%	CON 46.0%	UKIP 0.1%	03:47	
25	Ilford North	North London	CON 57.1%	LAB 42.8%	UKIP 0.1%	04:01	
	Ilford South	North London	LAB 99.7%	CON 0.2%	GRE 0.0%	03:30	
	Inverclyde	West Scotland	SNP 99.1%	LAB 0.7%	CON 0.1%	03:04	
	Inverness, Nairn, Badenoch and Strathspey	East Scotland	SNP 98.5%	LIB 1.3%	CON 0.2%	05:54	
	Ipswich	East Anglia	CON 98.4%	LAB 1.5%	LIB 0.0%	04:42	
	Isle of Wight	South England	CON 98.9%	GRE 1.0%	LIB 0.1%	03:12	
	Islington North	North London	LAB 99.6%	LIB 0.2%	LIB 0.1%	02:15	Jeremy Corbyn
	Islington South and Finsbury	North London	LAB 98.6%	LIB 1.0%	CON 0.3%	02:37	Emily Thornberry
	Islwyn	Wales	LAB 99.2%	CON 0.7%	PLA 0.1%	02:23	
	Jarrow	North England	LAB 99.3%	CON 0.7%	UKIP 0.1%	02:43	
	Keighley	Yorkshire	CON 97.4%	LAB 2.6%	UKIP 0.0%	08:15	
	Kenilworth and Southam	East Midlands	CON 99.8%	LAB 0.1%	LAB 0.1%	13:37	
	Kensington	North London	CON 98.3%	LIB 1.5%	LAB 0.2%	03:37	
	Kettering	East Anglia	CON 99.9%	LAB 0.1%	other 0.0%	03:16	
	Kilmarnock and Loudoun	West Scotland	SNP 99.6%	LAB 0.2%	CON 0.2%	02:13	
1	Kingston and Surbiton	South London	CON 50.0%	CON 50.0%	other 0.0%	03:44	
	Kingston upon Hull East	Humberside	LAB 97.9%	CON 2.1%	UKIP 0.0%	04:33	
	Kingston upon Hull North	Humberside	LAB 98.5%	CON 0.9%	LIB 0.6%	04:50	
	Kingston upon Hull West and Hessle	Humberside	LAB 96.5%	CON 3.4%	LIB 0.1%	04:34	
	Kingswood	West England	CON 99.4%	LAB 0.5%	LIB 0.1%	06:13	
	Kirkcaldy and Cowdenbeath	East Scotland	SNP 97.2%	LAB 2.5%	CON 0.3%	02:52	
	Knowsley	Lancashire	LAB 99.8%	CON 0.1%	LIB 0.0%	03:30	
	Lagan Valley	Northern Ireland	DUP 99.9%	UUP 0.1%	other 0.0%	01:23	
	Lanark and Hamilton East	West Scotland	SNP 98.6%	LAB 0.9%	CON 0.5%	03:16	
96	Lancaster and Fleetwood	Lancashire	CON 81.9%	LAB 17.8%	LIB 0.3%	08:11	
	Leeds Central	Yorkshire	LAB 99.5%	CON 0.5%	other 0.0%	06:23	Hilary Benn
	Leeds East	Yorkshire	LAB 97.7%	CON 2.2%	UKIP 0.1%	06:10	
	Leeds North East	Yorkshire	LAB 84.2%	CON 15.8%	other 0.0%	08:02	
49	Leeds North West	Yorkshire	LIB 66.0%	LAB 33.0%	CON 1.0%	07:14	
	Leeds West	Yorkshire	LAB 97.2%	CON 2.7%	UKIP 0.1%	06:33	
	Leicester East	East Midlands	LAB 98.6%	CON 1.4%	UKIP 0.0%	07:31	Keith Vaz
	Leicester South	East Midlands	LAB 99.8%	CON 0.2%	other 0.0%	06:01	
	Leicester West	East Midlands	LAB 91.2%	CON 8.7%	UKIP 0.0%	06:47	Liz Kendall
	Leigh	Greater Manchester	LAB 98.1%	CON 1.7%	UKIP 0.2%	03:06	
59	Lewes	South East England	CON 69.6%	LIB 30.3%	UKIP 0.1%	06:25	
	Lewisham East	South London	LAB 99.4%	CON 0.4%	LIB 0.2%	04:21	Heidi Alexander

Marg	Seat	Region	Favourite	2nd-favourite	3rd-favourite	2015 Dec	Notable candidates
	Lewisham West and Penge	South London	LAB 98.7%	CON 1.2%	GRE 0.1%	05:28	
	Lewisham, Deptford	South London	LAB 99.6%	CON 0.2%	GRE 0.1%	05:48	
	Leyton and Wanstead	North London	LAB 99.3%	CON 0.6%	LIB 0.1%	06:27	
	Lichfield	Severn	CON 99.7%	LAB 0.2%	LIB 0.0%	05:19	Michael Fabricant
	Lincoln	Humberside	CON 97.2%	LAB 2.7%	UKIP 0.1%	04:48	
	Linlithgow and East Falkirk	East Scotland	SNP 97.7%	CON 1.6%	LAB 0.6%	03:29	
	Liverpool, Riverside	Lancashire	LAB 99.9%	CON 0.1%	GRE 0.0%	04:46	
	Liverpool, Walton	Lancashire	LAB 99.9%	CON 0.0%	LIB 0.0%	05:27	
	Liverpool, Wavertree	Lancashire	LAB 99.9%	CON 0.1%	LIB 0.0%	04:00	
	Liverpool, West Derby	Lancashire	LAB 99.9%	LIB 0.0%	IND 0.0%	04:27	
	Livingston	East Scotland	SNP 98.7%	LAB 1.0%	CON 0.3%	03:50	
	Llanelli	Wales	LAB 96.4%	CON 1.8%	PLA 1.7%	02:14	
	Loughborough	East Midlands	CON 99.4%	LAB 0.5%	LIB 0.0%	06:10	
	Louth and Horncastle	Humberside	CON 99.3%	LAB 0.5%	UKIP 0.1%	07:34	
	Ludlow	Severn	CON 99.7%	LIB 0.2%	GRE 0.1%	03:33	
	Luton North	East Anglia	LAB 92.4%	CON 7.6%	other 0.0%	11:31	
95	Luton South	East Anglia	LAB 81.4%	CON 18.6%	LIB 0.0%	12:14	
	Macclesfield	Severn	CON 99.5%	LAB 0.3%	LIB 0.2%	08:40	
	Maidenhead	South England	CON 99.7%	LIB 0.2%	LAB 0.1%	06:02	Theresa May
	Maidstone and The Weald	South East England	CON 99.6%	LIB 0.3%	LAB 0.0%	06:06	
	Makerfield	Greater Manchester	LAB 95.9%	CON 4.1%	other 0.0%	03:40	
	Maldon	Essex	CON 99.5%	LIB 0.2%	LAB 0.1%	08:44	
	Manchester Central	Greater Manchester	LAB 99.8%	CON 0.1%	LIB 0.0%	05:51	
	Manchester, Gorton	Greater Manchester	LAB 97.5%	LIB 1.9%	IND 0.5%	04:59	
	Manchester, Withington	Greater Manchester	LAB 94.6%	LIB 5.3%	CON 0.1%	05:27	
23	Mansfield	East Midlands	LAB 56.5%	CON 43.4%	UKIP 0.1%	06:28	
	Meon Valley	South England	CON 99.7%	LIB 0.1%	UKIP 0.1%	08:44	
	Meriden	West Midlands	CON 99.7%	LAB 0.2%	LIB 0.1%	06:37	
	Merthyr Tydfil and Rhymney	Wales	LAB 99.5%	CON 0.4%	PLA 0.1%	03:03	
	Mid Bedfordshire	East Anglia	CON 99.7%	LAB 0.2%	LIB 0.1%	07:40	Nadine Dorries
	Mid Derbyshire	East Midlands	CON 99.4%	LAB 0.5%	LIB 0.1%	07:57	
	Mid Dorset and North Poole	South West England	CON 99.6%	LIB 0.3%	UKIP 0.1%	06:46	
	Mid Norfolk	East Anglia	CON 99.8%	LAB 0.2%	UKIP 0.1%	05:27	
	Mid Sussex	South East England	CON 99.7%	LAB 0.2%	UKIP 0.1%	07:12	Nicholas Soames
	Mid Ulster/Mid Ulster	Northern Ireland	SIN 100.0%	CON 0.0%	other 0.0%	04:22	
	Mid Worcestershire	Severn	CON 99.8%	LAB 0.1%	UKIP 0.1%	05:47	
	Middlesbrough	North England	LAB 99.0%	CON 0.9%	UKIP 0.1%	07:32	
	Middlesbrough South and East Cleveland	North England	CON 88.1%	LAB 11.7%	UKIP 0.1%	06:41	
	Midlothian	East Scotland	SNP 98.1%	LAB 1.1%	CON 0.8%	02:46	
	Milton Keynes North	Essex	CON 99.7%	LAB 0.3%	LIB 0.0%	06:56	
	Milton Keynes South	Essex	CON 99.1%	LAB 0.9%	LIB 0.0%	06:28	
	Mitcham and Morden	South London	LAB 99.5%	CON 0.5%	other 0.0%	02:40	
	Mole Valley	South England	CON 99.8%	LIB 0.2%	LAB 0.0%	04:46	
	Monmouth	Wales	CON 99.5%	LAB 0.5%	other 0.0%	04:12	
	Montgomeryshire	Wales	CON 95.4%	LIB 4.6%	PLA 0.0%	05:25	
28	Moray	East Scotland	SNP 59.0%	CON 41.0%	other 0.0%	03:13	Angus Robertson
	Morecambe and Lunesdale	Lancashire	CON 98.4%	LAB 1.5%	UKIP 0.0%	08:29	
	Morley and Outwood	Yorkshire	CON 88.1%	LAB 11.7%	LIB 0.1%	08:18	
	Motherwell and Wishaw	West Scotland	SNP 99.3%	LAB 0.4%	CON 0.3%	02:39	
	Na h-Eileanan an Iar	East Scotland	SNP 98.6%	LAB 0.8%	CON 0.6%	02:16	
	Neath	Wales	LAB 97.9%	PLA 1.1%	CON 1.0%	04:30	
	New Forest East	South England	CON 99.8%	LIB 0.1%	LAB 0.0%	04:31	
	New Forest West	South England	CON 99.9%	LIB 0.1%	LAB 0.0%	04:53	
	Newark	East Midlands	CON 99.7%	LAB 0.2%	LIB 0.1%	06:13	
	Newbury	South England	CON 99.7%	LIB 0.2%	GRE 0.1%	05:38	
	Newcastle upon Tyne Central	North England	LAB 99.5%	CON 0.4%	LIB 0.0%	01:19	
	Newcastle upon Tyne East	North England	LAB 99.3%	CON 0.5%	LIB 0.1%	01:07	
	Newcastle upon Tyne North	North England	LAB 93.3%	CON 6.6%	LIB 0.1%	01:43	
	Newcastle-under-Lyme	Severn	CON 92.8%	LAB 7.1%	UKIP 0.1%	05:45	
63	Newport East	Wales	LAB 71.2%	CON 28.8%	LIB 0.0%	03:19	
62	Newport West	Wales	LAB 70.5%	CON 29.4%	LIB 0.0%	03:04	
	Newry and Armagh	Northern Ireland	SIN 99.9%	UUP 0.1%	other 0.0%	05:35	
	Newton Abbot	South West England	CON 98.6%	LIB 1.4%	LAB 0.0%	05:46	
	Normanton, Pontefract and Castleford	Yorkshire	LAB 97.6%	CON 2.3%	UKIP 0.1%	05:18	Yvette Cooper
	North Antrim	Northern Ireland	DUP 100.0%	CON 0.0%	other 0.0%	01:45	Ian Paisley jr
	North Ayrshire and Arran	West Scotland	SNP 98.7%	CON 0.9%	LAB 0.3%	03:18	

Marg	Seat	Region	Favourite	2nd-favourite	3rd-favourite	2015 Dec	Notable candidates
	North Cornwall	South West England	CON 93.3%	LIB 6.6%	UKIP 0.0%	05:43	
	North Devon	South West England	CON 91.2%	LIB 8.7%	LAB 0.1%	06:43	
	North Dorset	South West England	CON 99.8%	LIB 0.1%	UKIP 0.1%	07:38	
	North Down	Northern Ireland	IND 98.9%	DUP 1.0%	CON 0.0%	02:07	Sylvia Hermon
	North Durham	North England	LAB 99.2%	CON 0.8%	other 0.0%	03:08	
	North East Bedfordshire	East Anglia	CON 99.7%	LAB 0.2%	LIB 0.0%	09:39	
	North East Cambridgeshire	East Anglia	CON 99.4%	LAB 0.3%	LAB 0.3%	07:50	
	North East Derbyshire	East Midlands	CON 94.7%	LAB 5.1%	LIB 0.1%	06:44	
43	North East Fife	East Scotland	LIB 64.5%	SNP 34.1%	CON 1.4%	03:53	
	North East Hampshire	South England	CON 99.4%	LIB 0.5%	LAB 0.0%	04:09	
	North East Hertfordshire	Essex	CON 99.8%	LAB 0.2%	UKIP 0.0%	03:21	
	North East Somerset	West England	CON 99.6%	LIB 0.2%	LAB 0.2%	05:32	Jacob Rees-Mogg
	North Herefordshire	Severn	CON 99.8%	LIB 0.1%	LAB 0.1%	04:33	
70	North Norfolk	East Anglia	CON 72.7%	LIB 27.3%	LAB 0.1%	07:03	Norman Lamb
	North Shropshire	Severn	CON 99.5%	LIB 0.3%	LAB 0.1%	03:41	Owen Paterson
	North Somerset	West England	CON 99.7%	LIB 0.2%	LAB 0.1%	07:28	Liam Fox
	North Swindon	West England	CON 99.8%	LAB 0.2%	LIB 0.0%	00:40	
	North Thanet	South East England	CON 99.7%	UKIP 0.1%	LAB 0.1%	10:05	
	North Tyneside	North England	LAB 98.9%	CON 1.0%	LIB 0.1%	04:57	
	North Warwickshire	East Midlands	CON 98.8%	LAB 1.1%	UKIP 0.0%	03:05	
	North West Cambridgeshire	East Anglia	CON 99.7%	LAB 0.2%	LIB 0.1%	04:27	
	North West Durham	North England	LAB 91.6%	CON 8.4%	UKIP 0.0%	03:14	
	North West Hampshire	South England	CON 99.8%	LIB 0.1%	LAB 0.1%	05:08	
	North West Leicestershire	East Midlands	CON 99.7%	LAB 0.2%	UKIP 0.1%	05:02	
	North West Norfolk	East Anglia	CON 99.7%	LAB 0.2%	UKIP 0.1%	07:57	
	North Wiltshire	West England	CON 99.5%	LIB 0.4%	LAB 0.1%	10:57	
	Northampton North	East Anglia	CON 99.1%	LAB 0.9%	UKIP 0.0%	05:03	
	Northampton South	East Anglia	CON 99.3%	LAB 0.7%	UKIP 0.0%	05:07	
	Norwich North	East Anglia	CON 99.2%	LAB 0.7%	UKIP 0.1%	07:58	
	Norwich South	East Anglia	LAB 89.2%	CON 9.7%	LIB 0.9%	05:15	Clive Lewis
	Nottingham East	East Midlands	LAB 99.2%	CON 0.8%	GRE 0.0%	06:41	
	Nottingham North	East Midlands	LAB 99.0%	CON 1.0%	other 0.0%	06:33	
	Nottingham South	East Midlands	LAB 87.5%	CON 12.5%	other 0.0%	06:21	
	Nuneaton	East Midlands	CON 98.6%	LAB 1.4%	UKIP 0.0%	01:52	
	Ochil and South Perthshire	East Scotland	SNP 86.0%	CON 13.7%	LAB 0.3%	02:31	
	Ogmore	Wales	LAB 99.3%	CON 0.6%	PLA 0.1%	04:00	
	Old Bexley and Sidcup	South London	CON 99.8%	LAB 0.1%	LIB 0.1%	04:21	
73	Oldham East and Saddleworth	Greater Manchester	LAB 73.5%	CON 26.4%	LIB 0.1%	05:36	
	Oldham West and Royton	Greater Manchester	LAB 99.2%	CON 0.7%	UKIP 0.1%	04:56	
	Orkney and Shetland	East Scotland	LIB 86.8%	SNP 12.6%	CON 0.6%	03:58	
	Orpington	South London	CON 99.6%	LAB 0.1%	LAB 0.1%	04:23	Jo Johnson
	Oxford East	West England	LAB 97.4%	LIB 2.2%	CON 0.3%	02:07	
	Oxford West and Abingdon	West England	CON 88.9%	LIB 11.1%	other 0.0%	06:45	
	Paisley and Renfrewshire North	West Scotland	SNP 98.6%	LAB 0.9%	CON 0.4%	03:01	
	Paisley and Renfrewshire South	West Scotland	SNP 99.0%	LAB 1.0%	CON 0.1%	02:23	Mhairi Black
	Pendle	Lancashire	CON 99.4%	LAB 0.4%	LIB 0.1%	05:04	
4	Penistone and Stocksbridge	Humberside	LAB 51.7%	CON 48.2%	UKIP 0.1%	05:59	
	Penrith and The Border	North England	CON 99.5%	LIB 0.2%	GRE 0.1%	05:50	
17	Perth and North Perthshire	East Scotland	CON 55.2%	SNP 44.8%	LAB 0.1%	03:33	
	Peterborough	East Anglia	CON 98.6%	LAB 1.3%	UKIP 0.1%	02:49	
	Plymouth, Moor View	South West England	CON 97.1%	LAB 2.8%	UKIP 0.1%	05:32	
92	Plymouth, Sutton and Devonport	South West England	CON 80.8%	LAB 19.2%	other 0.0%	07:30	
	Pontypridd	Wales	LAB 96.2%	CON 3.6%	PLA 0.1%	03:34	Owen Smith
	Poole	South West England	CON 99.7%	LIB 0.2%	UKIP 0.0%	06:54	
	Poplar and Limehouse	North London	LAB 98.8%	CON 1.1%	LIB 0.1%	05:00	
	Portsmouth North	South England	CON 99.7%	LAB 0.3%	other 0.0%	06:15	
	Portsmouth South	South England	CON 90.3%	LIB 9.1%	LAB 0.7%	06:10	
	Preseli Pembrokeshire	Wales	CON 98.0%	LAB 1.8%	PLA 0.1%	07:58	Stephen Crabb
	Preston	Lancashire	LAB 98.8%	CON 1.1%	LIB 0.0%	03:56	
	Pudsey	Yorkshire	CON 99.3%	LAB 0.6%	GRE 0.0%	07:24	
	Putney	South London	CON 99.1%	LAB 0.6%	LIB 0.2%	00:57	Justine Greening
	Rayleigh and Wickford	Essex	CON 99.4%	UKIP 0.2%	GRE 0.1%	04:45	
	Reading East	South England	CON 98.6%	LAB 1.3%	LIB 0.1%	07:33	
	Reading West	South England	CON 99.0%	LAB 0.9%	LIB 0.0%	07:28	
	Redcar	North England	LAB 89.9%	CON 8.9%	UKIP 1.2%	03:36	
	Redditch	Severn	CON 99.2%	LAB 0.6%	LIB 0.1%	06:02	

Marg	Seat	Region	Favourite	2nd-favourite	3rd-favourite	2015 Dec	Notable candidates
	Reigate	South England	CON 99.6%	LIB 0.2%	LAB 0.1%	04:35	
	Rhondda	Wales	LAB 84.0%	PLA 15.9%	CON 0.1%	02:45	Chris Bryant
	Ribble Valley	Lancashire	CON 99.6%	LAB 0.3%	LIB 0.1%	05:22	
	Richmond (Yorks)	Yorkshire	CON 99.3%	GRE 0.2%	GRE 0.2%	07:39	
52	Richmond Park	South London	CON 67.5%	LIB 32.5%	other 0.0%	04:08	Zac Goldsmith
	Rochdale	Greater Manchester	LAB 91.5%	CON 5.7%	IND 2.6%	03:54	Simon Danczuk
	Rochester and Strood	South East England	CON 99.1%	UKIP 0.6%	LAB 0.3%	06:19	
	Rochford and Southend East	Essex	CON 99.6%	LAB 0.3%	UKIP 0.1%	03:25	
	Romford	North London	CON 99.5%	LAB 0.3%	UKIP 0.2%	05:26	
	Romsey and Southampton North	South England	CON 99.6%	LIB 0.2%	GRE 0.1%	05:58	
83	Ross, Skye and Lochaber	East Scotland	SNP 76.9%	LIB 22.8%	CON 0.3%	05:20	
	Rossendale and Darwen	Lancashire	CON 98.6%	LAB 1.3%	UKIP 0.0%	07:58	
97	Rother Valley	Humberside	LAB 81.8%	CON 17.6%	UKIP 0.6%	04:19	
	Rotherham	Humberside	LAB 90.4%	CON 9.0%	UKIP 0.6%	03:39	
	Rugby	East Midlands	CON 99.6%	LAB 0.3%	LIB 0.1%	06:15	
	Ruislip, Northwood and Pinner	South London	CON 99.6%	LAB 0.2%	LIB 0.1%	04:19	
	Runnymede and Weybridge	South England	CON 99.6%	LIB 0.2%	LAB 0.1%	04:09	Philip Hammond
	Rushcliffe	East Midlands	CON 99.5%	LAB 0.4%	UKIP 0.1%	06:53	Kenneth Clarke
	Rutherglen and Hamilton West	West Scotland	SNP 98.6%	LAB 1.3%	CON 0.1%	02:51	
	Rutland and Melton	East Midlands	CON 99.5%	LAB 0.2%	LIB 0.2%	06:15	
	Saffron Walden	Essex	CON 99.7%	LIB 0.3%	other 0.0%	06:00	
	Salford and Eccles	Greater Manchester	LAB 94.3%	CON 5.5%	LIB 0.2%	05:32	
	Salisbury	West England	CON 99.5%	LIB 0.2%	GRE 0.1%	03:49	
	Scarborough and Whitby	Yorkshire	CON 99.6%	LAB 0.4%	other 0.0%	05:24	
18	Scunthorpe	Humberside	CON 55.2%	LAB 44.8%	other 0.0%	05:04	
78	Sedgefield	North England	LAB 75.2%	CON 24.8%	other 0.0%	03:45	
	Sefton Central	Lancashire	LAB 95.6%	CON 4.4%	other 0.0%	05:52	
	Selby and Ainsty	Yorkshire	CON 99.8%	LAB 0.2%	other 0.0%	06:07	
	Sevenoaks	South East England	CON 99.8%	LIB 0.1%	LAB 0.1%	04:59	Michael Fallon
	Sheffield Central	Yorkshire	LAB 98.4%	GRE 1.0%	LIB 0.4%	05:06	
	Sheffield South East	Yorkshire	LAB 97.9%	CON 2.1%	other 0.0%	05:24	
	Sheffield, Brightside and Hillsborough	Yorkshire	LAB 99.5%	CON 0.3%	LIB 0.1%	05:29	
77	Sheffield, Hallam	Yorkshire	LIB 74.7%	LAB 24.4%	CON 0.9%	04:52	Nick Clegg
	Sheffield, Heeley	Yorkshire	LAB 96.9%	CON 1.7%	LIB 1.4%	05:18	
	Sherwood	East Midlands	CON 99.6%	LAB 0.4%	other 0.0%	05:56	
	Shipley	Yorkshire	CON 99.5%	IND 0.4%	LAB 0.1%	07:11	Philip Davies
	Shrewsbury and Atcham	Severn	CON 99.6%	LAB 0.3%	LIB 0.1%	03:43	
	Sittingbourne and Sheppey	South East England	CON 99.8%	UKIP 0.1%	LAB 0.1%	07:30	
	Skipton and Ripon	Yorkshire	CON 99.6%	LIB 0.4%	LAB 0.1%	05:51	
	Sleaford and North Hykeham	Humberside	CON 99.8%	LAB 0.2%	other 0.0%	05:26	
	Slough	South England	LAB 88.3%	CON 11.7%	other 0.0%	05:18	
	Solihull	West Midlands	CON 99.5%	LIB 0.5%	other 0.0%	05:54	
	Somerton and Frome	South West England	CON 99.4%	LIB 0.5%	LAB 0.1%	05:38	
26	South Antrim	Northern Ireland	DUP 57.8%	UUP 42.2%	other 0.0%	02:03	
	South Basildon and East Thurrock	Essex	CON 99.7%	LAB 0.2%	UKIP 0.1%	04:07	
	South Cambridgeshire	East Anglia	CON 99.6%	LIB 0.3%	LAB 0.1%	04:22	
	South Derbyshire	East Midlands	CON 99.8%	LAB 0.2%	other 0.0%	03:52	
	South Dorset	South West England	CON 99.8%	LAB 0.2%	other 0.0%	06:45	
79	South Down	Northern Ireland	SIN 75.6%	SDLP 24.4%	other 0.0%	04:36	
	South East Cambridgeshire	East Anglia	CON 99.7%	LIB 0.3%	other 0.0%	06:37	
	South East Cornwall	South West England	CON 99.8%	LIB 0.1%	LAB 0.1%	06:44	
	South Holland and The Deepings	Humberside	CON 99.5%	LIB 0.3%	LAB 0.2%	04:42	
	South Leicestershire	East Midlands	CON 99.9%	LIB 0.1%	LAB 0.1%	07:17	
	South Norfolk	East Anglia	CON 99.7%	LAB 0.1%	LAB 0.1%	04:38	
	South Northamptonshire	East Anglia	CON 99.8%	LAB 0.1%	LAB 0.1%	07:19	Andrea Leadsom
	South Ribble	Lancashire	CON 99.6%	LAB 0.3%	LIB 0.1%	06:00	
	South Shields	North England	LAB 98.8%	CON 1.0%	UKIP 0.2%	02:34	
	South Staffordshire	Severn	CON 99.8%	LAB 0.2%	other 0.0%	06:42	
	South Suffolk	East Anglia	CON 99.7%	LIB 0.2%	LAB 0.1%	07:17	
	South Swindon	West England	CON 99.3%	LAB 0.7%	other 0.0%	02:42	
	South Thanet	South East England	CON 85.2%	LAB 11.4%	UKIP 3.4%	10:36	
	South West Bedfordshire	East Anglia	CON 99.8%	LAB 0.1%	LIB 0.1%	08:36	
	South West Devon	South West England	CON 99.8%	LIB 0.1%	LAB 0.1%	07:53	
	South West Hertfordshire	Essex	CON 99.6%	LIB 0.3%	LAB 0.1%	04:38	
	South West Norfolk	East Anglia	CON 99.8%	LAB 0.1%	LAB 0.1%	08:07	Liz Truss
	South West Surrey	South England	CON 98.4%	IND 1.6%	other 0.0%	06:48	Jeremy Hunt

Marg	Seat	Region	Favourite	2nd-favourite	3rd-favourite	2015 Dec	Notable candidates
	South West Wiltshire	West England	CON 99.8%	LAB 0.1%	LAB 0.1%	03:49	
	Southampton, Itchen	South England	CON 99.0%	LAB 1.0%	LIB 0.0%	04:59	
35	Southampton, Test	South England	CON 61.1%	LAB 38.9%	other 0.0%	05:01	
	Southend West	Essex	CON 99.8%	LAB 0.1%	LAB 0.1%	03:16	David Amess
87	Southport	Lancashire	CON 78.3%	LIB 21.3%	LAB 0.4%	04:39	
	Spellthorne	South England	CON 99.7%	LIB 0.2%	LAB 0.1%	07:25	
	St Albans	Essex	CON 85.8%	LIB 14.0%	LAB 0.1%	05:32	
	St Austell and Newquay	South West England	CON 97.2%	LIB 2.2%	LAB 0.7%	07:15	
	St Helens North	Lancashire	LAB 99.5%	CON 0.2%	LIB 0.1%	04:40	
	St Helens South and Whiston	Lancashire	LAB 99.8%	CON 0.2%	LIB 0.0%	03:50	
88	St Ives	South West England	CON 79.0%	LIB 21.0%	other 0.0%	15:28	
	Stafford	Severn	CON 99.3%	LAB 0.6%	LIB 0.1%	07:01	
	Staffordshire Moorlands	Severn	CON 99.6%	LAB 0.3%	LIB 0.1%	06:30	
	Stalybridge and Hyde	Greater Manchester	LAB 89.3%	CON 10.7%	other 0.0%	08:48	
	Stevenage	Essex	CON 99.6%	LAB 0.4%	other 0.0%	04:35	
57	Stirling	East Scotland	SNP 68.5%	CON 30.9%	LAB 0.6%	03:19	
	Stockport	Greater Manchester	LAB 93.2%	CON 6.5%	LIB 0.2%	05:49	
	Stockton North	North England	LAB 92.7%	CON 7.3%	other 0.0%	03:42	
	Stockton South	North England	CON 93.6%	LAB 6.4%	LIB 0.0%	04:23	
64	Stoke-on-Trent Central	Severn	LAB 71.1%	CON 28.6%	UKIP 0.4%	06:06	
41	Stoke-on-Trent North	Severn	CON 63.2%	LAB 36.8%	other 0.0%	08:44	
	Stoke-on-Trent South	Severn	CON 86.9%	LAB 13.1%	other 0.0%	09:13	
	Stone	Severn	CON 99.8%	LAB 0.2%	UKIP 0.0%	07:56	
	Stourbridge	West Midlands	CON 99.7%	LAB 0.3%	other 0.0%	05:16	
	Strangford	Northern Ireland	DUP 99.9%	IND 0.1%	other 0.0%	02:00	
	Stratford-on-Avon	East Midlands	CON 99.8%	LIB 0.1%	LAB 0.1%	05:14	
	Streatham	South London	LAB 99.1%	CON 0.6%	LIB 0.3%	03:15	Chuka Umunna
	Stretford and Urmston	Greater Manchester	LAB 98.4%	CON 1.5%	LIB 0.0%	06:12	
	Stroud	West England	CON 96.9%	LAB 3.1%	other 0.0%	03:49	
	Suffolk Coastal	East Anglia	CON 99.8%	LAB 0.1%	LIB 0.1%	06:43	
	Sunderland Central	North England	LAB 91.8%	CON 8.2%	other 0.0%	23:17	
	Surrey Heath	South England	CON 99.7%	LIB 0.3%	other 0.0%	07:30	Michael Gove
	Sutton and Cheam	South London	CON 92.1%	LIB 7.9%	other 0.0%	04:28	
	Sutton Coldfield	West Midlands	CON 99.8%	LAB 0.1%	LIB 0.1%	04:10	Andrew Mitchell
	Swansea East	Wales	LAB 99.0%	CON 0.8%	PLA 0.1%	03:28	
	Swansea West	Wales	LAB 93.9%	CON 5.9%	LIB 0.1%	04:35	
	Tamworth	Severn	CON 99.6%	LAB 0.4%	other 0.0%	04:43	
	Tatton	Severn	CON 99.8%	LAB 0.1%	LIB 0.1%	07:04	
	Taunton Deane	South West England	CON 98.7%	LIB 1.2%	LAB 0.0%	07:04	
	Telford	Severn	CON 86.8%	LAB 13.2%	other 0.0%	04:46	
	Tewkesbury	West England	CON 99.7%	LIB 0.3%	other 0.0%	07:30	
	The Cotswolds	West England	CON 99.6%	LAB 0.2%	LAB 0.2%	12:54	
	The Wrekin	Severn	CON 99.6%	LAB 0.3%	LIB 0.1%	04:17	
	Thirsk and Malton	Yorkshire	CON 99.7%	LAB 0.2%	LIB 0.1%	07:15	
	Thornbury and Yate	West England	CON 86.8%	LIB 13.2%	other 0.0%	05:46	
	Thurrock	Essex	CON 89.7%	LAB 6.6%	UKIP 3.7%	04:23	
	Tiverton and Honiton	South West England	CON 99.7%	LIB 0.2%	UKIP 0.1%	08:00	
	Tonbridge and Malling	South East England	CON 99.8%	LIB 0.2%	UKIP 0.1%	05:40	
	Tooting	South London	LAB 84.1%	CON 15.9%	other 0.0%	01:13	
	Torbay	South West England	CON 93.0%	LIB 7.0%	other 0.0%	04:43	
	Torfaen	Wales	LAB 94.2%	CON 5.7%	PLA 0.1%	02:44	
	Torridge and West Devon	South West England	CON 98.9%	LIB 1.0%	LAB 0.0%	10:52	
	Totnes	South West England	CON 99.7%	LIB 0.3%	LAB 0.0%	05:50	Sarah Wollaston
	Tottenham	North London	LAB 98.6%	CON 1.3%	LIB 0.1%	03:15	
	Truro and Falmouth	South West England	CON 99.0%	LIB 0.8%	LAB 0.2%	07:09	
	Tunbridge Wells	South East England	CON 99.8%	LIB 0.1%	LAB 0.1%	04:33	
67	Twickenham	South London	LIB 72.4%	CON 27.6%	other 0.0%	04:36	Vince Cable
	Tynemouth	North England	LAB 86.7%	CON 13.3%	other 0.0%	05:10	
	Upper Bann	Northern Ireland	DUP 90.0%	UUP 7.4%	SIN 2.6%	02:20	
	Uxbridge and South Ruislip	South London	CON 99.8%	LAB 0.2%	other 0.0%	04:31	Boris Johnson
36	Vale of Clwyd	Wales	CON 61.3%	LAB 38.6%	PLA 0.1%	03:08	
	Vale of Glamorgan	Wales	CON 98.0%	LAB 1.8%	PLA 0.1%	05:34	
	Vauxhall	South London	LAB 93.7%	LIB 5.8%	CON 0.5%	03:28	Kate Hoey
	Wakefield	Yorkshire	CON 84.2%	LAB 15.8%	other 0.0%	06:08	Mary Creagh
	Wallasey	Lancashire	LAB 98.4%	CON 1.6%	other 0.0%	03:42	Angela Eagle
	Walsall North	West Midlands	CON 90.5%	LAB 9.4%	UKIP 0.1%	04:32	

Marg	Seat	Region	Favourite	2nd-favourite	3rd-favourite	2015 Dec	Notable candidates
34	Walsall South	West Midlands	LAB 60.3%	CON 39.7%	other 0.0%	04:48	
	Walthamstow	North London	LAB 99.8%	CON 0.2%	LIB 0.0%	06:34	Stella Creasy
	Wansbeck	North England	LAB 96.6%	CON 3.3%	LIB 0.1%	12:54	
	Wantage	West England	CON 99.6%	LIB 0.4%	other 0.0%	07:11	
	Warley	West Midlands	LAB 99.4%	CON 0.6%	LIB 0.0%	03:34	
	Warrington North	Severn	LAB 89.4%	CON 10.6%	other 0.0%	06:36	
	Warrington South	Severn	CON 96.6%	LAB 3.3%	LIB 0.1%	07:24	
	Warwick and Leamington	East Midlands	CON 99.0%	LAB 0.9%	LIB 0.0%	14:01	
	Washington and Sunderland West	North England	LAB 97.6%	CON 2.3%	LIB 0.1%	23:30	
	Watford	Essex	CON 99.0%	LIB 0.5%	LAB 0.5%	04:38	
	Waveney	East Anglia	CON 98.1%	LAB 1.9%	other 0.0%	08:00	
	Wealden	South East England	CON 99.8%	LIB 0.2%	UKIP 0.0%	05:06	
	Weaver Vale	Severn	CON 92.5%	LAB 7.3%	LIB 0.2%	06:48	
	Wellingborough	East Anglia	CON 99.6%	LIB 0.2%	LAB 0.2%	04:41	Peter Bone
	Wells	South West England	CON 90.5%	LIB 9.5%	other 0.0%	11:26	
	Welwyn Hatfield	Essex	CON 99.7%	LAB 0.3%	LIB 0.0%	05:47	Grant Shapps
	Wentworth and Dearne	Humberside	LAB 99.5%	CON 0.5%	LIB 0.0%	04:06	
	West Aberdeenshire and Kincardine	East Scotland	CON 90.3%	SNP 9.0%	LIB 0.8%	04:37	
	West Bromwich East	West Midlands	LAB 89.8%	CON 10.1%	UKIP 0.0%	04:12	Tom Watson
	West Bromwich West	West Midlands	LAB 88.0%	CON 11.9%	UKIP 0.1%	03:42	
	West Dorset	South West England	CON 99.0%	LIB 1.0%	other 0.0%	06:18	Oliver Letwin
	West Dunbartonshire	West Scotland	SNP 98.9%	LAB 1.0%	CON 0.1%	02:24	
	West Ham	North London	LAB 99.5%	CON 0.2%	GRE 0.2%	04:17	
75	West Lancashire	Lancashire	LAB 74.6%	CON 25.4%	other 0.0%	04:27	
	West Suffolk	East Anglia	CON 99.8%	UKIP 0.1%	LIB 0.1%	05:03	
	West Tyrone	Northern Ireland	SIN 100.0%	CON 0.0%	other 0.0%	01:44	
	West Worcestershire	Severn	CON 99.3%	LIB 0.7%	other 0.0%	04:22	
38	Westminster North	North London	LAB 62.1%	CON 37.9%	other 0.0%	03:04	
	Westmorland and Lonsdale	North England	LIB 87.3%	CON 12.7%	other 0.0%	03:27	Tim Farron
	Weston-Super-Mare	West England	CON 99.2%	LIB 0.8%	other 0.0%	07:26	
	Wigan	Greater Manchester	LAB 97.6%	CON 2.3%	LIB 0.1%	03:28	
	Wimbledon	South London	CON 99.4%	LAB 0.4%	LIB 0.2%	02:55	
	Winchester	South England	CON 97.7%	LIB 2.3%	other 0.0%	07:49	
	Windsor	South England	CON 99.8%	LAB 0.2%	LIB 0.0%	06:46	
80	Wirral South	Lancashire	LAB 76.3%	CON 23.7%	other 0.0%	04:04	
98	Wirral West	Lancashire	CON 82.9%	LAB 17.1%	other 0.0%	05:01	
	Witham	Essex	CON 99.8%	LIB 0.1%	LAB 0.1%	06:18	Priti Patel
	Witney	West England	CON 99.6%	LIB 0.3%	LAB 0.0%	05:42	
	Woking	South England	CON 99.8%	LIB 0.2%	other 0.0%	05:29	
	Wokingham	South England	CON 99.6%	LIB 0.3%	LAB 0.0%	05:41	
40	Wolverhampton North East	West Midlands	LAB 62.7%	CON 37.3%	other 0.0%	05:12	
	Wolverhampton South East	West Midlands	LAB 98.6%	CON 1.4%	other 0.0%	05:26	
	Wolverhampton South West	West Midlands	CON 89.4%	LAB 10.6%	LIB 0.0%	05:38	
	Worcester	Severn	CON 99.7%	LAB 0.3%	LIB 0.0%	03:05	
27	Workington	North England	LAB 57.8%	CON 42.2%	other 0.0%	05:16	
6	Worsley and Eccles South	Greater Manchester	LAB 51.8%	CON 48.2%	other 0.0%	05:14	
	Worthing West	South East England	CON 99.8%	LIB 0.2%	LAB 0.0%	06:57	
46	Wrexham	Wales	CON 65.6%	LAB 34.4%	UKIP 0.0%	01:30	
	Wycombe	Essex	CON 99.8%	LIB 0.2%	UKIP 0.1%	05:06	
	Wyre and Preston North	Lancashire	CON 99.7%	LIB 0.2%	LAB 0.1%	05:19	
	Wyre Forest	Severn	CON 99.9%	LAB 0.1%	other 0.0%	06:55	
	Wythenshawe and Sale East	Greater Manchester	LAB 99.3%	CON 0.7%	other 0.0%	04:32	
	Yeovil	South West England	CON 92.3%	LIB 7.7%	other 0.0%	05:54	
39	Ynys Môn	Wales	PLA 60.6%	LAB 35.3%	CON 4.1%	03:48	
	York Central	Yorkshire	LAB 94.9%	CON 5.1%	UKIP 0.0%	08:34	
	York Outer	Yorkshire	CON 99.3%	LIB 0.6%	LAB 0.1%	08:40	